



Centering the Community in Resilience Planning

Webinar Sponsors



We are a peer-to-peer network of people and organizations working to restore and revitalize urban waterways and the socioeconomically challenged communities that surround them

Today's Presenters



Corrine Van Hook-Turner
Movement Strategy Center
Oakland, CA



Drew Curtis
Ironbound Community Corporation
Newark, NJ

Centering the Community in Resilience Planning

UWLN Webinar
September 12, 2019
Corrine Van Hook-Turner



A background photograph showing a group of people at what appears to be a community meeting or workshop. On the left, a man with glasses and a striped shirt is looking towards the right. In the center and right, several women are engaged in conversation, with one woman in a light blue shirt smiling and gesturing. They are standing in front of a stone wall with various posters and charts pinned to it. One poster has the word 'STRATEGY' visible. The overall atmosphere is collaborative and positive.

Who We Are

Movement Strategy Center (MSC)
supports people, grassroots
organizations, alliances, networks, and
funders to build the leadership, vision
and relationships necessary for
powerful and transformative social
justice movements.



Big Inquiry

How do we lead a transition from a world of domination and extraction to a world of regeneration, resilience, and interdependence?



Our Projects and Programs

- Transitions in Place
- Innovation Center
- Restorative Economy
- Youth and Intergenerational Organizing
- Community Climate Solutions

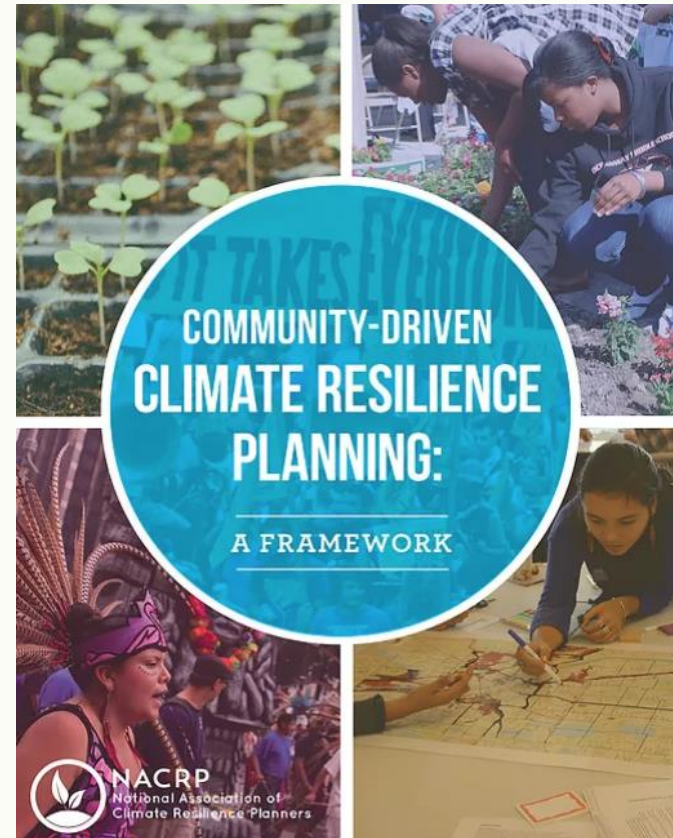
A photograph of a community garden with several people, including children and adults, working in the garden beds. A red wooden fence is in the background, and houses are visible behind it. A yellow banner is overlaid on the bottom half of the image.

What is Climate Resilience?

RESILIENCE =
Adaptation +
Mitigation +
Social Cohesion +
Equity

Community-Driven Climate Resilience Planning Framework

- This [framework](#) was co-launched with NACRP members and grassroots partners via the NACRP in the summer of 2017.
- It was created through convening community driven planners from base-building and base-building support organizations.
- It includes principles, practices, and key capacities for community-driven





Community-Driven Planning

- Builds leadership outside of local government agencies
- Increases collaboration and capacity
- Advances a multi-sectoral approach for more holistic and effective solutions

Priorities

- **Promote community-driven climate resilience solutions** and centralize frontline community leadership
- **Ensure climate solutions meet real needs** of climate-impacted communities
- **Increase capacity for whole systems thinking** and cross-sector collaboration
- **Foster opportunities for strategic alignment** among leaders in climate movement ecosystem to scale up community-driven solutions

Seven Components of Community- Driven Planning

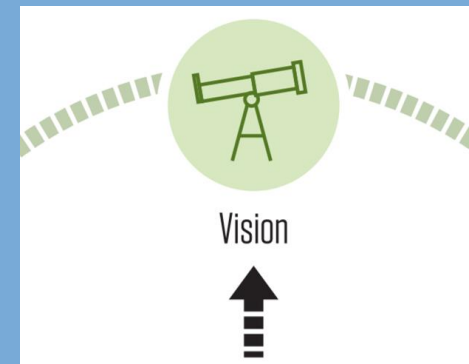


Engine of Climate Resilience Planning



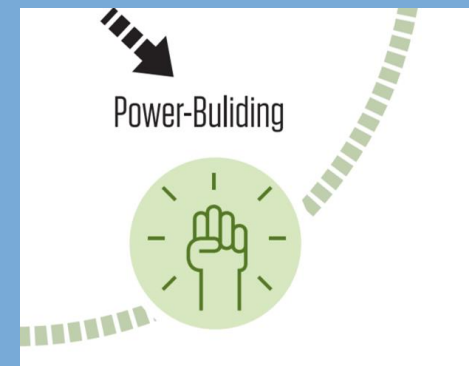
- Define the goal
- Make sure it's community-derived
- Inspire social cohesion
- Motivate engagement for the work ahead

Visioning



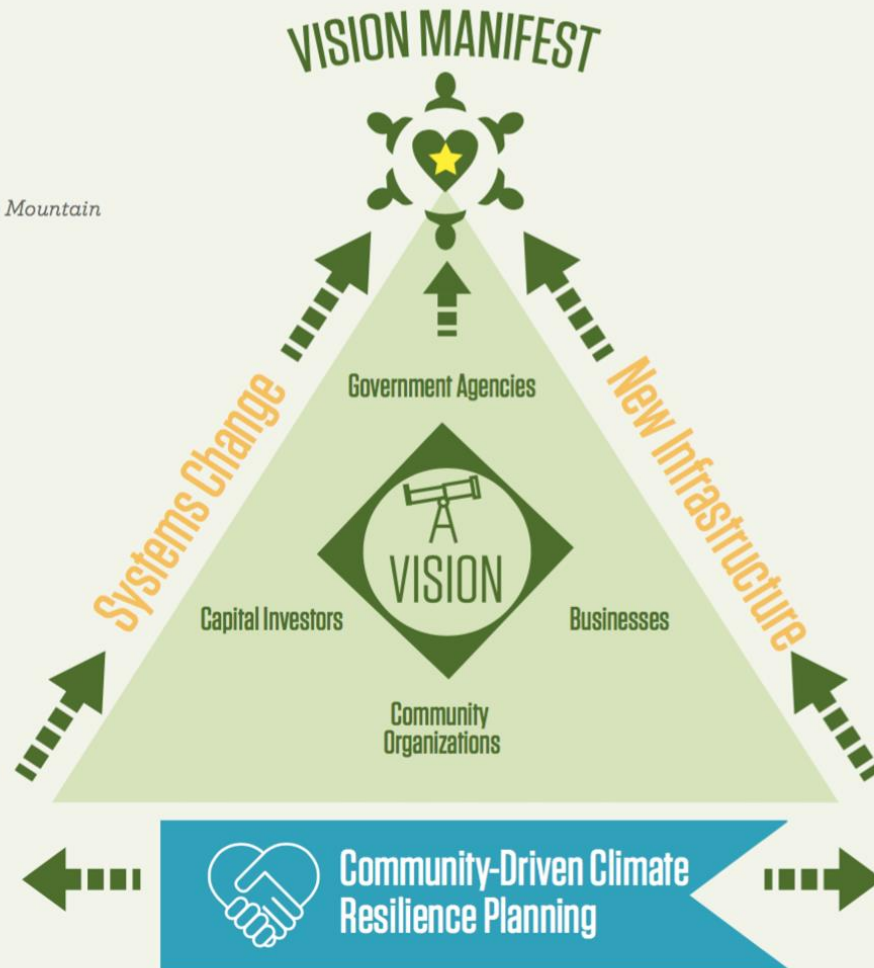
- Invests in both people and systems
- Builds cross-sector coalitions
- Increases self-governance
- Increases democratic engagement capacity
- Builds strategies and connection across all levels of governance and stakeholders (residents to decision-makers)

Power Building



GRAPHIC 3.1

Two Paths Up The Mountain



Solutions Development



A photograph of a group of people practicing archery in a forest. In the foreground, a man is focused on his target, holding a bow. Behind him, another person is also aiming. The background is filled with trees and foliage, creating a natural setting for the activity.

Five Principles

1. Whole Systems Thinking
2. Desired Outcomes Reflected in Every Step
3. Planning Process as a Learning Process
4. Planning into Action
5. Balancing Power Dynamics among Stakeholders



National Association of Climate Resilience

- NACRP is an emerging multi-stakeholder, peer-learning, resource, and referral network that fosters effective, place-based climate resilience planning and implementation. **Visit nacrp.org** for more info.

○ Members

○ Facilitator
S

○ Partners



Climate Justice for Ironbound and for Newark



Thursday, September 12, 2019
Centering the Community in Resilience Planning

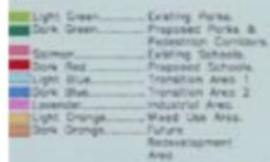


- **Early Childhood Education & Youth Development**
- **Family Services & Adult Education**
- **Environmental Justice & Community Development**

47 years of serving our community

2001

LIFEINC



TRANSITION AREA 1
SHOWS THE PRESENTATION
OF INDUSTRIAL BUILDING
FOR NO. 20

TRANSITION AREA 2
FIVE DISCREPANCY INDICATORS (SPRINT)
AGENCY USE ONLY

COMMUNITY PRESERVATION AREA
INFILL AND REDEVELOPMENT PERMITTED
ONLY UNDER STRICT STANDARDS TO
PROTECT COMMUNITY CHARACTER AND
LIABILITY

HUDSON CO. KEARNY TOWNSHIP - HUDSON
ESSEX CO. PASSAIC RIVER

INDUSTRIAL AREA
NO RESIDENTIAL REZONING

WORLD LEADER
IN INDUSTRIAL DEVELOPMENT
PROTECTING SUBJECTS TO
AN AWARD-WINNING DESIGN

FUTURE REDEVELOPMENT
AREA, EDUCATIONAL CAMPUS
WITH POTENTIAL LIMITED
RESIDENTIAL FLOOR
SPACE ADDED

INDUSTRIAL AREA NO RESIDENTIAL REZONING

GRAPHIC SCALE
SCALE IN FEET



SCALE IN WHITS

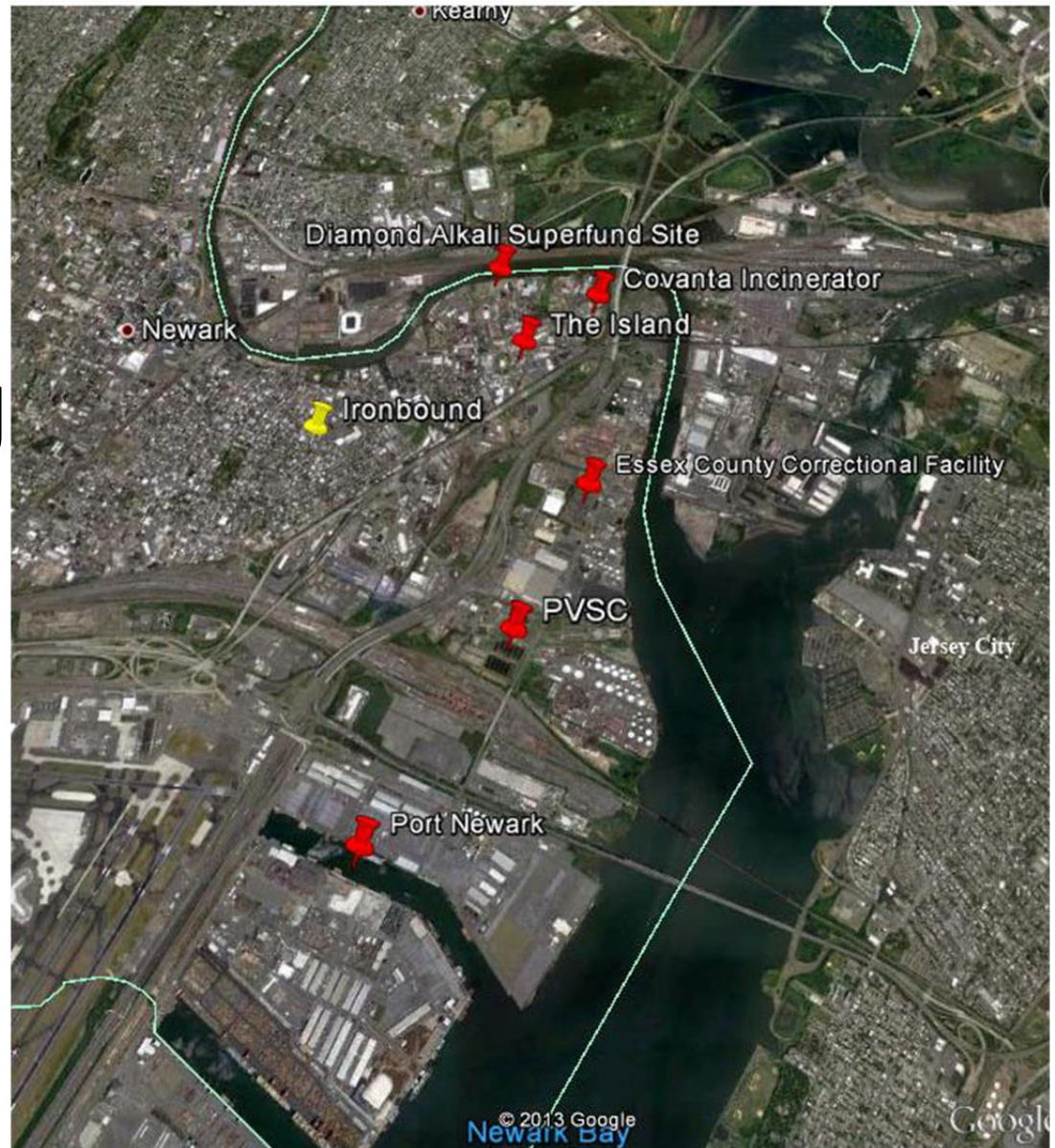
NOTE: PLANTWETRIC INFORMATION SHOWN HEREON,
SUCH AS DENSITY AND ROADWAY LOCATION,
IS BASED ON MAPPING COMPILED FROM AERIAL

IRONBOUND COMMUNITY MASTER PLAN
PLAN MAESTRO DE LA COMUNIDAD DE IRONBOUND
PLANO MESTRE DA COMUNIDADE DO IRONBOUND

IRONBOUND COMMUNITY CORPORATION
And the people of the Ironbound community
Prepared by Alan Malloch, AICP, PP

Graphic design by Moya Architects
Scale: 1" = 116'

Ironbound: EJ Context





Superstorm Sandy was a game changer!

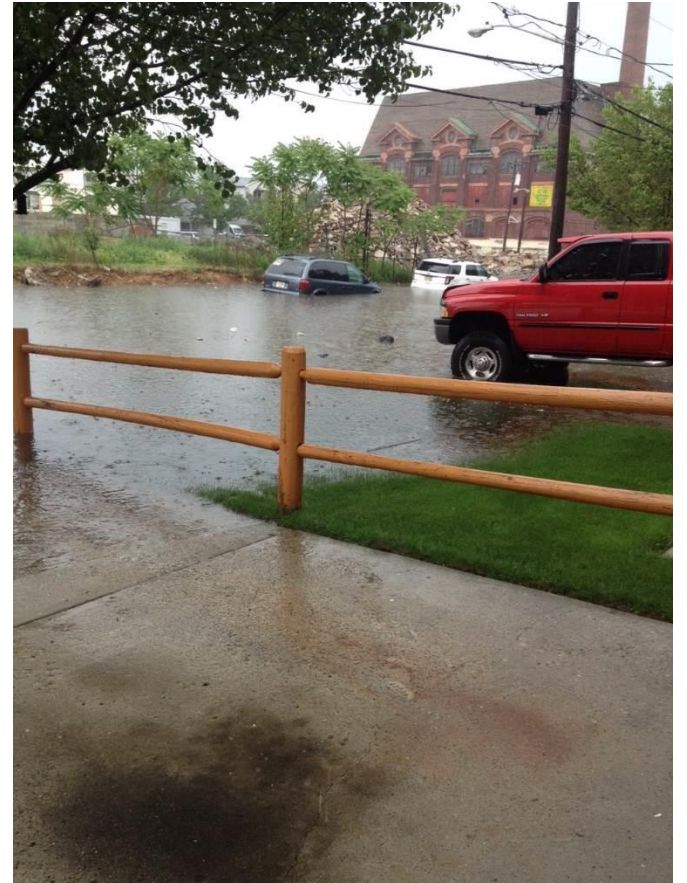
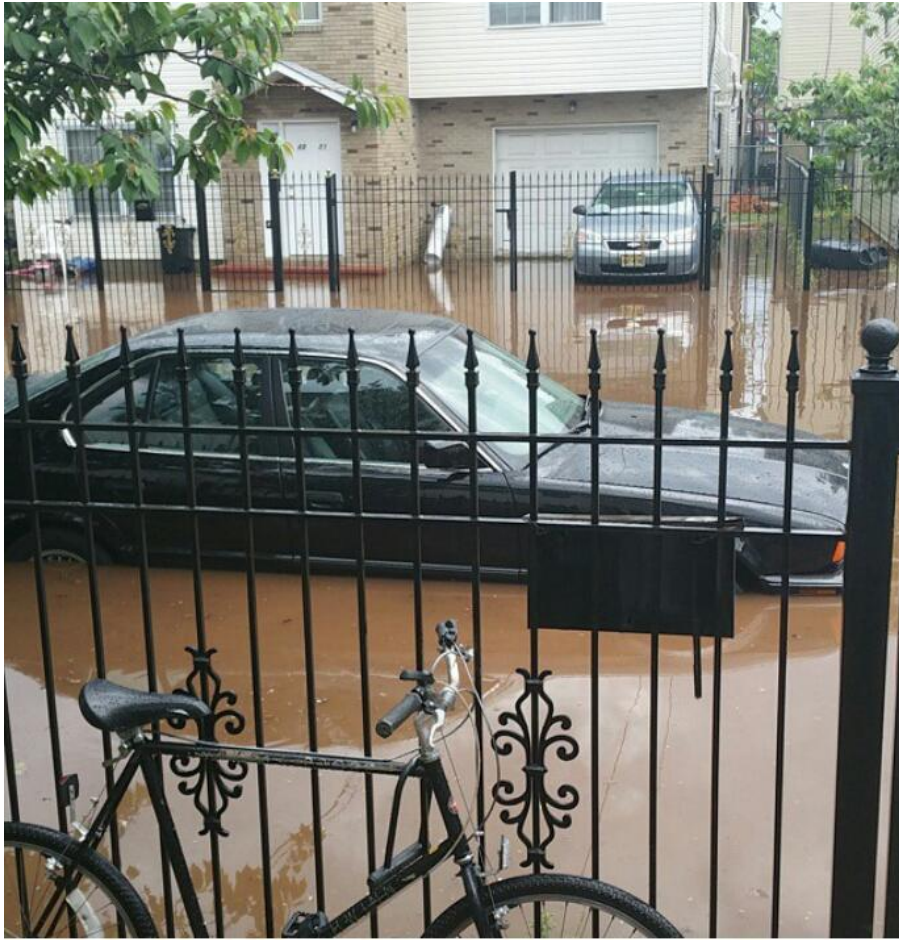
Regional Impacts

Hurricane Sandy

Impacts on our Urban Coast

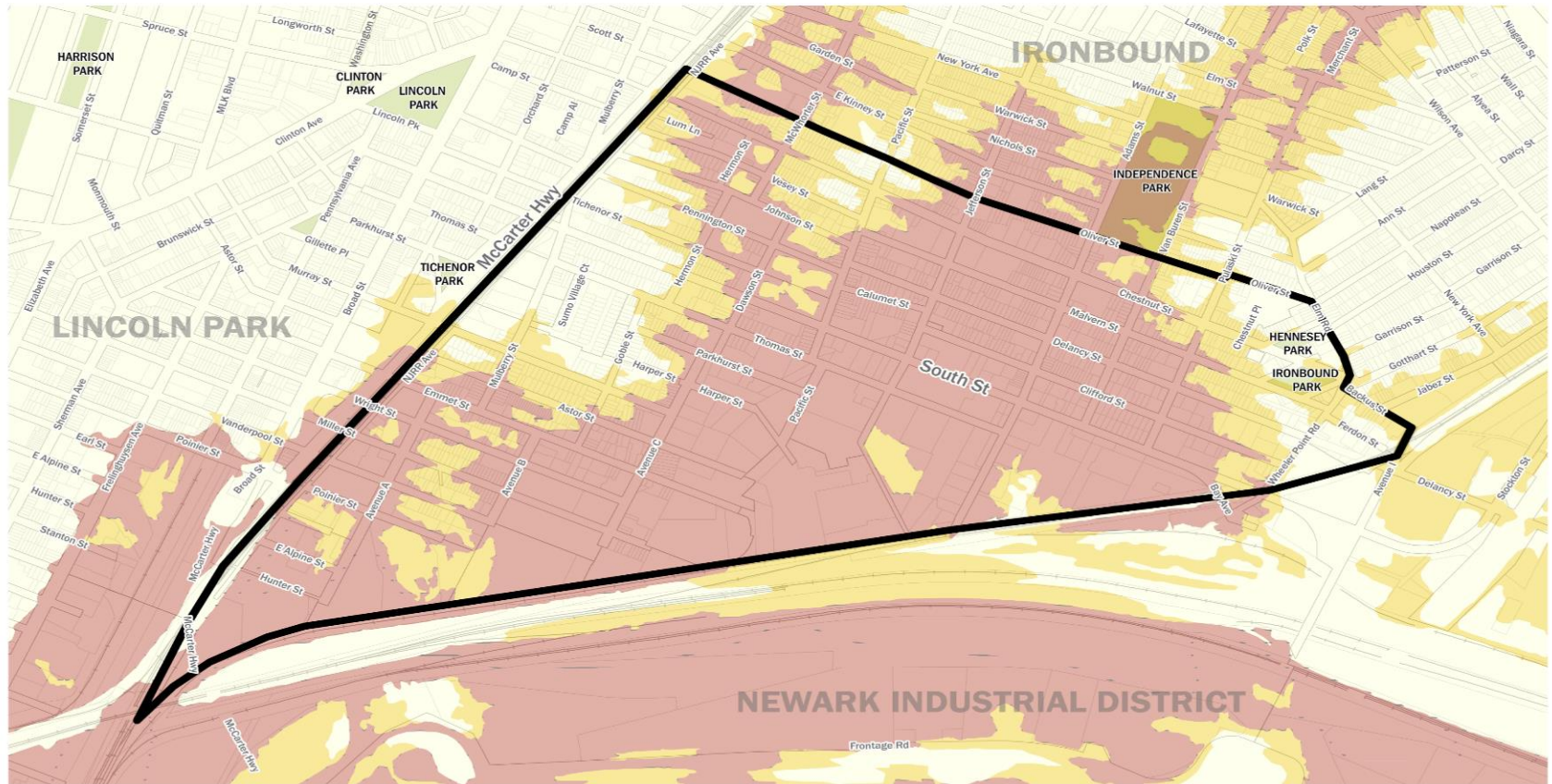
October and November
2012





On top of everyday flooding

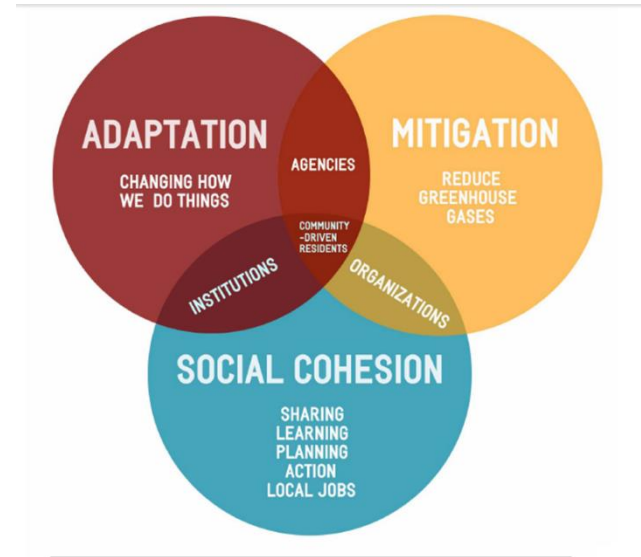
FEMA FLOOD RISK ZONES: future vulnerability



0 0.125 0.25 0.5 Miles

- AE - 1% Annual Chance of Flooding
- 0.2% Annual Chance Flood Hazard
- X - Low Risk for Flooding

Newark Resiliency Action Plan



NEWARK RAP Process

Starts here!

Neighborhood-based Resident Engagement



City-wide, Multi-Sector
Steering Committee
Engagement



Draft Plan



Neighborhood-based
Resident Engagement



City-wide, Multi-Sector
Steering Committee
Engagement



Final Plan &
Implementation





Resiliency Planning

5 Elements of Resiliency:

- 1.Minimizing flooding and the amount of toxic residue left behind as a result of flooding
- 2.Reducing temperatures and adapting to heat impacts
- 3.Preparing for, and responding to, extreme weather situations
- 4.Reducing Green House Gases (GHG) and local air pollution
- 5.Minimizing black-outs and stopping the use of dirty energy through energy efficiency and renewable energy alternatives



NEWARK RAP: Strategy



Policy Development at the municipal, state, regional, and federal levels

On-the-ground projects in 3 target wards: East (ICC), South (CWF), and West (NJEJA)

Community Empowerment to create long-lasting, resident climate justice advocates

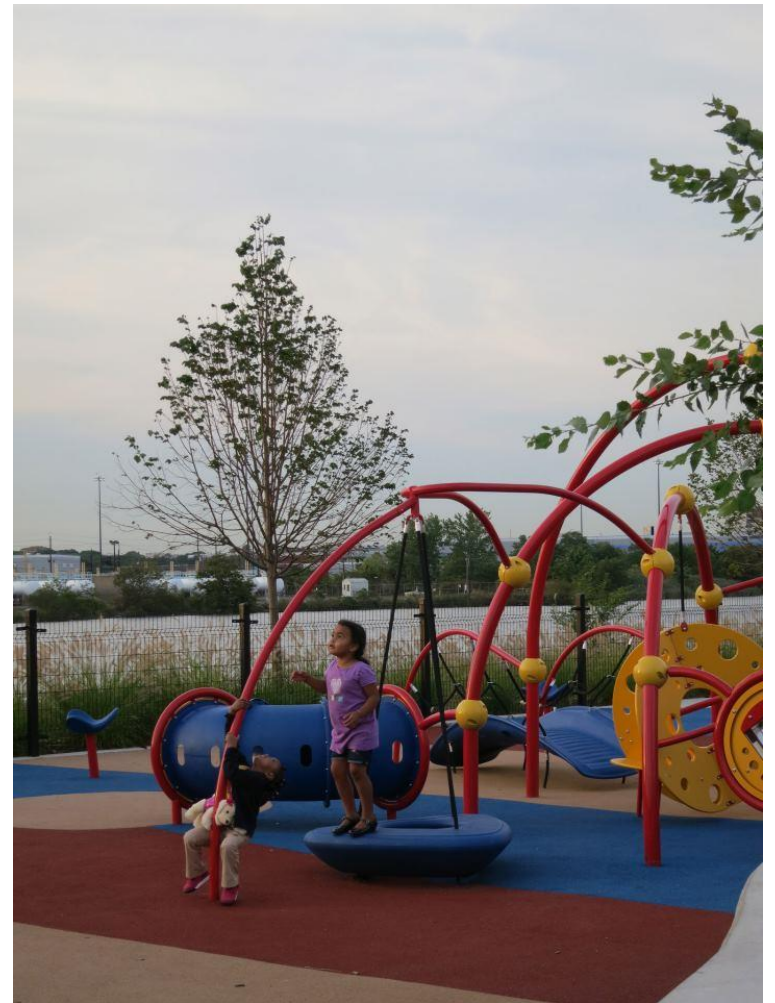




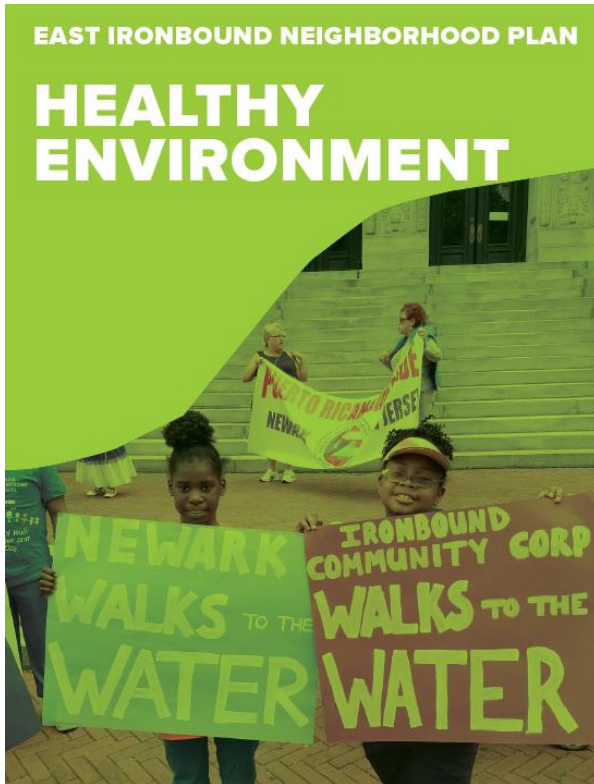
Resiliency Action



Green Infrastructure



Riverfront Park



Green Corridors

Green Infrastructure, public art, traffic calming and refurbished storefronts along key corridors will improve safety, increase foot traffic to local businesses and enhance connections to the Riverfront parks.

1.1

4.1

7.2

EAST IR

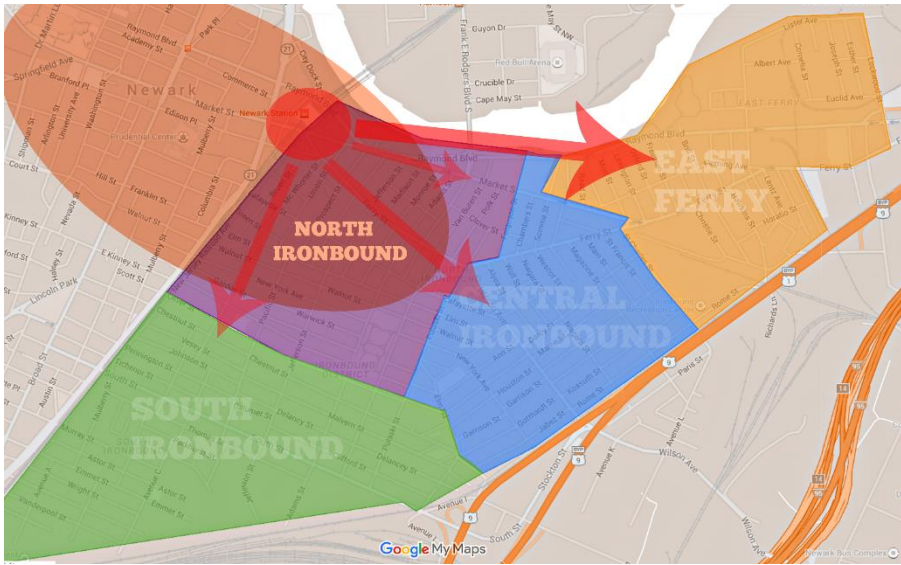
DEMONSTRATION GREEN DISTRICT



Future Projects



On-going Education



Climate Resilience, Gentrification, & Displacement



Ironbound
COMMUNITY
CORPORATION

1 9 6 9 - 2 0 1 9

50th

ANNIVERSARY

Drew Curtis

dcurtis@ironboundcc.org

973. 817.7013 ext. 207

For More Information

Questions and Thank You!



Corrine Van Hook-Turner

Movement Strategy Center

corrine@movementstrategy.org



Drew Curtis

Ironbound Community Corporation

dcurtis@ironboundcc.org

BEFORE YOU GO...

Thanks in advance for completing the evaluation survey!

Register for our upcoming webinars:

- Thur. 9/26– ***Anti-displacement Strategies: Environmental Restoration...Meet Housing***
- Wed. 10/9—***After the Storm: Equitable Recovery and Resilient Adaptation (3rd in climate resilience series)***



Blogs and resources on climate resilience:
www.urbanwaterslearningnetwork.org

Diana Toledo, River Network
dtoledo@rivernetwork.org

Maria Brodine, Groundwork USA
maria@groundworkusa.org

